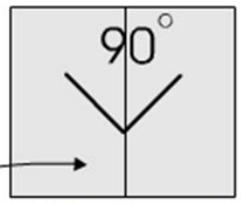
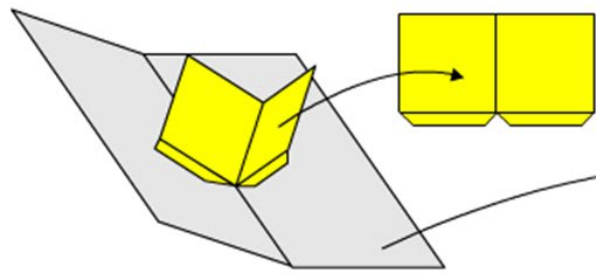
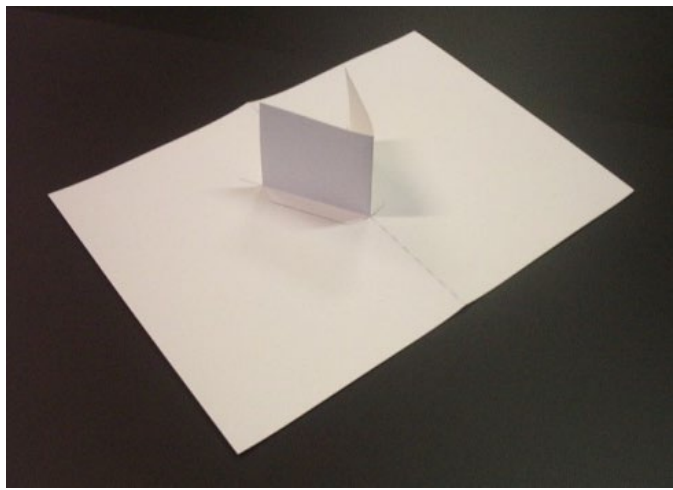
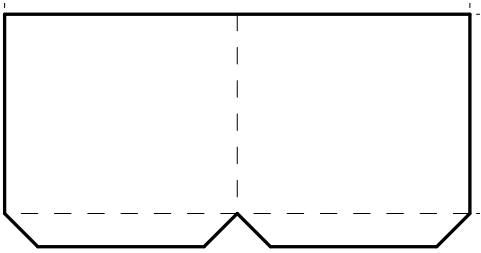
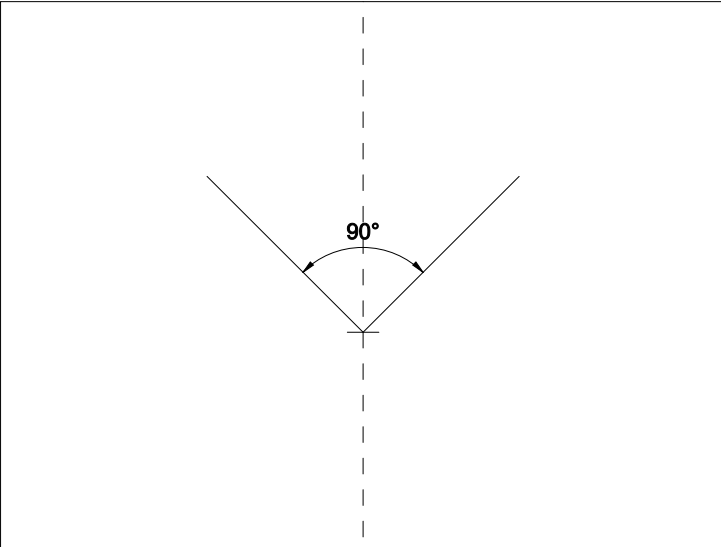
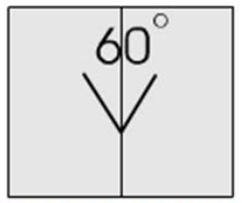


# Researching: Investigating 'V-Fold' pop-up mechanisms.

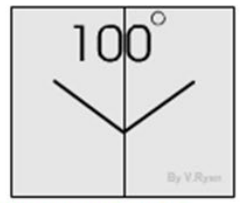
**Task: manufacture a V-fold mechanism (pop up card)**



If a 90 degree angle is used the card will stand up vertically when the backing card is opened.



If a 60 degree angle is used the card will lean towards the back when the backing card is opened.

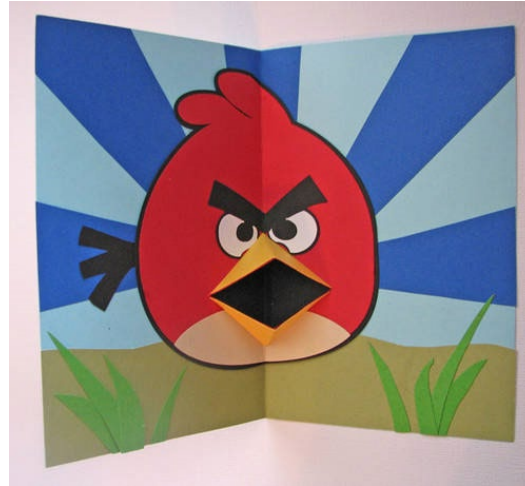


If a 100 degree angle is used the card will lean forwards from the back when the backing card is opened.

# Can you create a pop up card using the mechanism you have just created?



www.alamy.com - B8FPMM



# Help videos

- <https://www.prima.co.uk/craft/easy-craft-ideas/a30671912/make-pop-up-card/>
- <https://www.youtube.com/watch?v=7CkxiCq97zI>
- <https://www.youtube.com/watch?v=fkBiqFMgpb0>