

How useful is Source B for an enquiry into medical treatment on the Western Front?

Source B

From Ward Muir's *Observations of an Orderly*, published in 1917. Muir was a Lance Corporal in the RAMC and worked in a hospital in London that received patients from the Western Front at the end of the chain of evacuation.

We orderlies meet each convoy at the front door of the hospital. The walking-cases are the first to arrive – men who are either not ill enough, or not badly enough wounded, to need to be put on stretchers in ambulances. They come from the station in motor-cars supplied by the London Ambulance Column. The few minutes which the walking-case spends in the receiving hall are occupied in drinking a cup of cocoa, and in 'having his particulars taken'. Poor soul! – he is weary of giving his 'particulars'. He has had to give them half-a-dozen times at least, perhaps more, since he left the front. At the field dressing-station they wanted his particulars, at the clearing-station, on the train, at the base hospital, on another train, on the steamer, on the next train, and now in this English hospital.

1) Dissect the question:

-Underline the topic of the question

-Circle the concept of the question

2) Dissect the source:

-Highlight in **ONE COLOUR** two things the source tells you about medical treatment on the Western Front

-Highlight in **ANOTHER COLOUR** the provenance (nature, origin and purpose)

Source provenance

Nature:

Reliable: YES/NO

Why:

Origin:

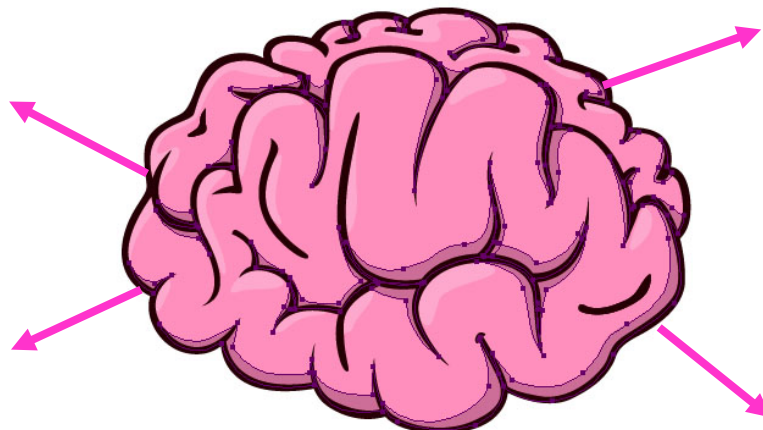
Reliable: YES/NO

Why:

Purpose:

Reliable: YES/NO

Why:



How useful is Source B for an enquiry into medical treatment on the Western Front?

Source B

From Ward Muir's *Observations of an Orderly*, published in 1917. Muir was a Lance Corporal in the RAMC and worked in a hospital in London that received patients from the Western Front at the end of the chain of evacuation.

We orderlies meet each convoy at the front door of the hospital. The walking-cases are the first to arrive – men who are either not ill enough, or not badly enough wounded, to need to be put on stretchers in ambulances. They come from the station in motor-cars supplied by the London Ambulance Column. The few minutes which the walking-case spends in the receiving hall are occupied in drinking a cup of cocoa, and in 'having his particulars taken'. Poor soul! – he is weary of giving his 'particulars'. He has had to give them half-a-dozen times at least, perhaps more, since he left the front. At the field dressing-station they wanted his particulars, at the clearing-station, on the train, at the base hospital, on another train, on the steamer, on the next train, and now in this English hospital.

The source is **mostly/slightly** useful for an enquiry into medical treatment on the Western Front.

Evidence from the source is...

.....

.....

.....

This shows me that...

.....

.....

.....

This supports my own knowledge because...

.....

.....

.....

The source is/is not reliable because...

.....

.....

.....

Question 2a			
WWW		EBI	
I can explain why the quotes from the source are useful to the enquiry.		I can explain why the quotes from the source are useful to the enquiry.	
I can apply my own knowledge to the source to support my explanation .		I can apply my own knowledge to the source to support my explanation .	
I can evaluate the utility of the source based on the provenance.		I can evaluate the utility of the source based on the provenance.	