

How useful is Source F for an enquiry into medical treatment on the Western Front?

Source F

From Pat Beauchamp's autobiography, *Fanny Goes to War*, published in 1919. Beauchamp first worked as a nurse, bringing in the wounded from the trenches, and from 1916 as an ambulance driver. Here she is writing about an account of FANYs from an English newspaper.

The following is an extract from an account by Mr. Beach Thomas in a leading daily: "Our Yeomanry nurses who, among other work, drive, clean, and manage their own ambulance cars.. have done prodigies [wonders] along the Belgian front. One of their latest activities has been to devise and work a peripatetic [travelling] bath.. Ten collapsible baths are packed into a motor car which circulates behind the lines. The water is heated by the engine in a cistern in the interior of the car and offers the luxury of a hot bath to several score men."

1) Dissect the question:

- Underline the topic of the question
- Circle the concept of the question

2) Dissect the source:

- Highlight in **ONE COLOUR** two things the source tells you about medical treatment on the Western Front
- Highlight in **ANOTHER COLOUR** the provenance (nature, origin and purpose)

Source provenance

Nature:

Reliable: YES/NO

Why:

.....

Origin:

Reliable: YES/NO

Why:

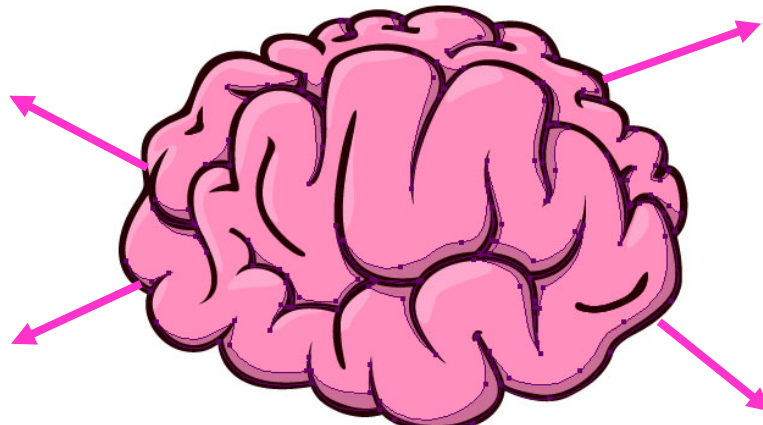
.....

Purpose:

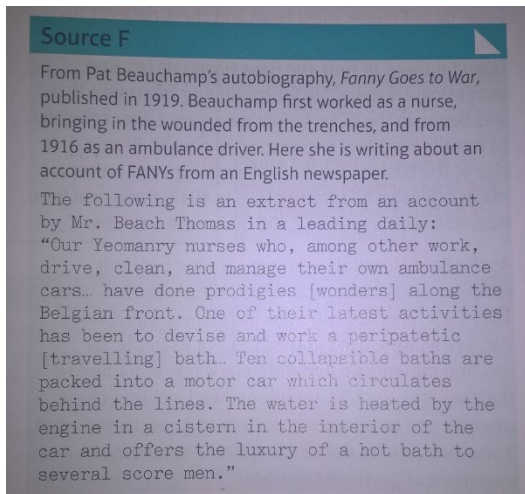
Reliable: YES/NO

Why:

.....



How useful is Source F for an enquiry into medical treatment on the Western Front?



The source is **mostly/slightly** useful for an enquiry into medical treatment on the Western Front.

Evidence from the source is...

.....

.....

.....

This shows me that...

.....

.....

.....

This supports my own knowledge because...

.....

.....

.....

The source is/is not reliable because...

.....

.....

.....

Question 2a			
WWW		EBI	
I can explain why the quotes from the source are useful to the enquiry.		I can explain why the quotes from the source are useful to the enquiry.	
I can apply my own knowledge to the source to support my explanation .		I can apply my own knowledge to the source to support my explanation .	
I can evaluate the utility of the source based on the provenance.		I can evaluate the utility of the source based on the provenance.	